



Installation Instructions


System Requirements

- Microsoft® Windows® 2000 Professional with service pack 4 or greater, Windows XP with service pack 2 or greater, or Windows Vista™ operating system
- Internet Explorer v5.01 or later
- 256 MB RAM – Windows 2000 and Windows XP systems
512 MB RAM – Windows Vista systems
- 16-bit color (65,536 colors)
- 800x600 screen resolution (1024x768 screen resolution recommended)
- CD drive
- Available USB port
- 100 MB of hard disk space

Installing ID Works Software

Log on to the operating system with administrative privileges. If your account does not have administrative privileges, contact your help desk or system administrator.

1. Close all Windows programs.
2. Insert the ID Works CD into your CD drive. The ID Works setup program starts automatically. (If the setup program does not start, run autorun.exe from the root directory of the installation CD.)
3. Select **Install Products** and then **Install ID Works software** or **Evaluate ID Works software**.
4. Follow the prompts on the screen.

 Cards and reports printed from the evaluation software will print with a watermark.

Datacard Group

11111 Bren Road West
Minnetonka, MN 55343-9015 USA
952.933.1223
www.datacard.com

539755-001 Rev. A

Installing Add-ons

The software CD contains installations for three optional applications. The Proximity Card Plug-in can be installed only after either ID Works Standard or Enterprise has been installed. The Plug-in for Lifetouch® Photo Import and the Plug-in for SASI Photo Export can be installed only after ID Works Enterprise has been installed.


1. With the ID Works CD still in your CD drive and the Welcome page of the Installation CD displayed, select **Install Products**.
2. Select the plug-in you purchased.
3. Follow the prompts on the screen.


Installing Adobe Reader

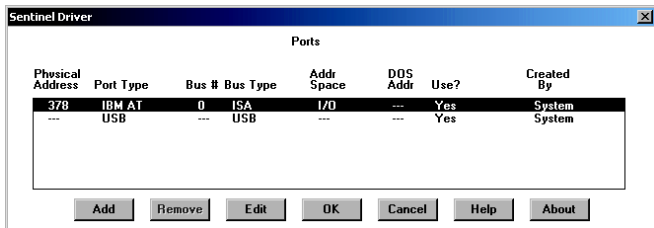
Adobe® Reader® software is required to use the Online Reference Library. If it is not already on your computer, do the following:

1. With the ID Works CD still in your CD drive and the Welcome page of the Installation CD displayed, select **View the ID Works Online Manuals**.
2. Click **Install Adobe Reader**.
3. Follow the prompts on the screen.

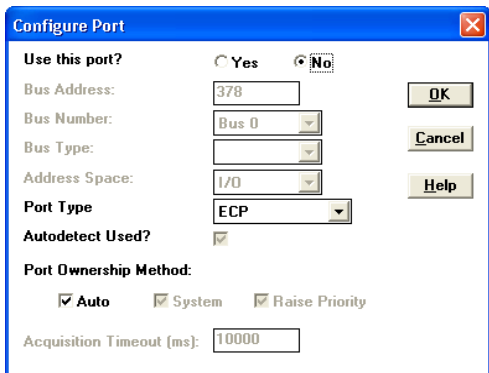
Installing and Configuring the USB Security Key

 The following information does not apply if you are evaluating ID Works software.

1. After software installation is complete and the computer reboots, insert the ID Works software USB security key into an empty USB port. The system will recognize the key and enable it for use.
-  Completing the following steps will improve performance.
2. Select **Start | Programs | Datacard | Support | Security Key Configuration Utility**. The SetupSysDriver window opens.
3. Click **Configure Driver**. You will see a dialog box similar to the following, depending on your system:



4. Select each parallel port and click **Edit**. The Configure Port dialog box opens.



Configure Port

Use this port? Yes No

Bus Address:

Bus Number:

Bus Type:

Address Space:

Port Type:

Autodetect Used?

Port Ownership Method:

Auto System Raise Priority

Acquisition Timeout (ms):

OK Cancel Help

5. Select **No** (next to **Use this port?**) and click **OK**. Confirm the changes you made.
6. When all parallel ports have been edited, click **OK** to exit the Sentinel Driver dialog box.
7. From the menu bar, select **File** and then **Exit**.

Initial Login

The installation program creates a default ID Works User Name: Admin. The password for this user name is also Admin. You can use the Admin user name to log into any ID Works application.

- i Recommendation:** Use the Admin User Name to log in to the Administrator application. Immediately create an ID Works user account for yourself with System Administrator privileges (see the Administrator help topic “Manage user accounts”), and then change the password for the Admin User Name (see the Administrator help topic “Change your password”).

Learning about ID Works Applications

There are three sources of information about ID Works identification software:

Online Reference Library — Included are the ID Works *Operator's Guide* and the *Administrator's Guide*, as well as guides on using printers available from Datacard. You can read documents online or print them for later reference. To access the Online Reference Library, double-click the ID Works Library icon on your desktop.

Online Help – Each ID Works application comes with online help for instant access to step-by-step instructions. You can access an application’s online help whenever the application is open by pressing **F1** or, on the menu bar, selecting **Help** and then **Online Help**.

Read Me File – Contains last-minute technical information about the current ID Works release. To view the Read Me file from the installation CD Welcome page, select **View Information about this Version** and then select the edition you are installing.

U.S. Patent No. 6,632,250.

This manual and the accompanying software are proprietary to DataCard Corporation and are protected under U.S. patent and copyright laws as well as various international laws and treaties. This manual may not be copied, translated, sold, or otherwise transferred to a third party, in whole or in part, without the express written permission of DataCard Corporation.

Information in this manual is subject to change without notice. DataCard Corporation assumes no responsibility for any errors that may appear in this manual.

ID Works and Datacard are trademarks and registered trademarks of DataCard Corporation in the U.S. and other countries. Adobe and Reader are registered trademarks of Adobe Systems Incorporated. Lifetouch is a registered trademark of Lifetouch Incorporated. Microsoft, Windows, and Vista are trademarks or registered trademarks of Microsoft Corporation.

All other product names are trademarks of their respective owners.

©1999-2007 DataCard Corporation. All rights reserved.

Printed in the United States of America.